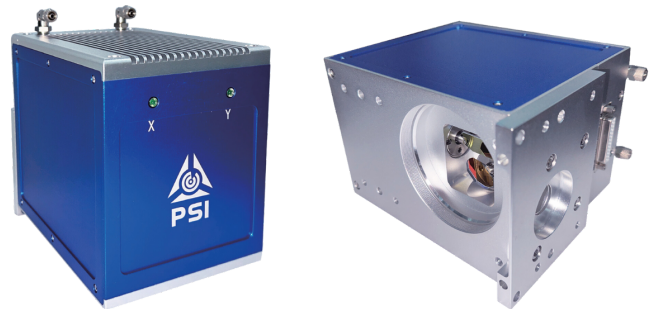


2 D S C A N H E A D

PSH-15-A-W

en | Data sheet | 1.0

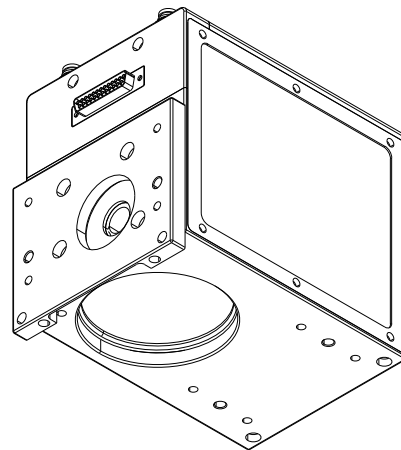
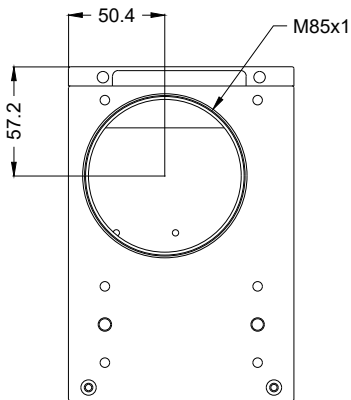
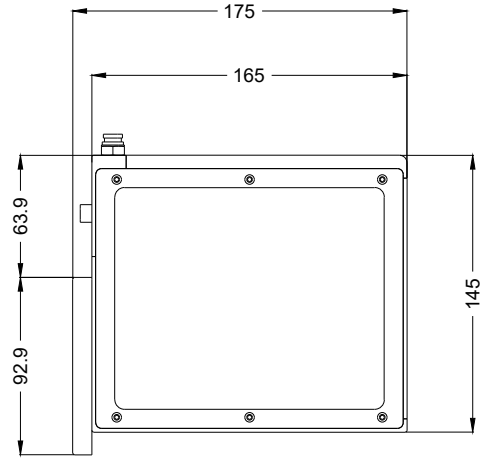
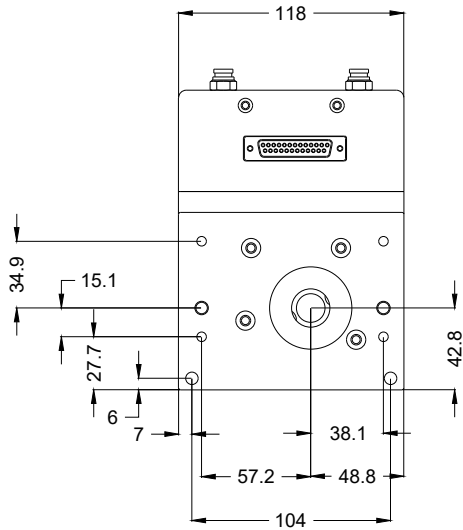
- Premium 2-axis laser scan head / 15 mm
- Superior precision and minimum drift
- For demanding applications at high laser power up to 2500 Watt (IR, CW)
- Extremely fast up to 60 m/s for linear processing, such as laser texturing



Wavelength	1064 nm	Max. offset-drift per axis	20 µrad/K
Input beam diameter	15 mm	Long-term-drift per axis (8 h) (<)	80 µrad
Max. laser power @ 1064 nm CW (<)	2500 W	Cooling method	Water
Tracking delay	0.16 ms	Cooling flowrate	3 l/min
Writing speed	700 cps ^[1]	Control interface	XY2-100
Positioning speed (<)	30 m/s	Supply voltage DC	15 V
Marking speed	3 mm/s	Current consumption	5 A
Max. optical deflection (±)	0.35 rad	Operation temperature	15 – 35 °C
Resolution	12 µrad	Storage temperature	-35 – 60 °C
Repeatability (RMS) (<)	2 µrad	Mechanical dimensions (W × D × H)	118 × 165 × 145 mm
Max. gain-drift per axis	20 ppm/K	Net weight	4.65 kg

^[1] f=160 / Hight 1 mm





2D scan head

PSH-15-A-W

Dimensions are given in millimeters and are intended as reference values.
Binding information is available on request.

