

2 D SCAN HEAD

PSH-30-M-W

en | Data sheet | 1.1

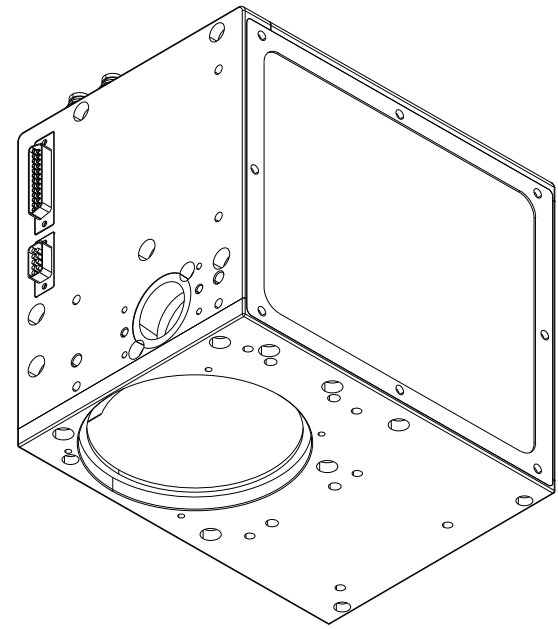
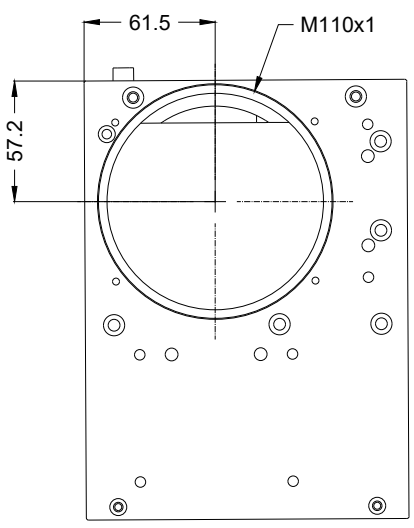
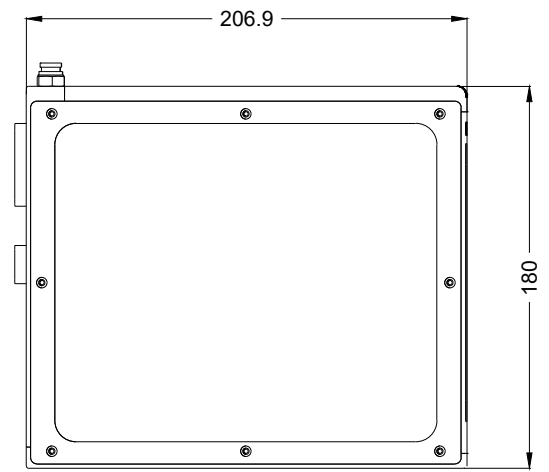
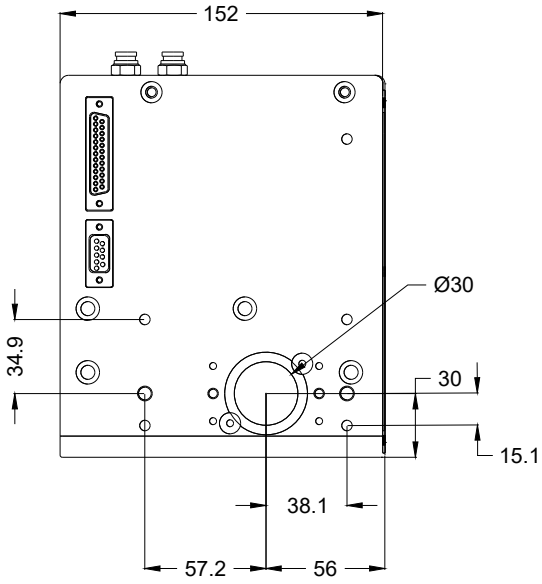
- Premium 2-axis laser scan head / 30 mm
- Laser powers up to 8 kW, CW 1064 nm
- Highest precision with minimal drift
- Designed for demanding laser applications



Wavelength	1030 – 1080 nm	Long-term-drift per axis (8 h)	50 µrad
Input beam diameter	30 mm	Cooling method	Water
Tracking delay	0.45 ms	Cooling power	3 l/min
Writing speed	200 cps	Control interface	XY2-100-Standard
Marking speed	1 m/s	Humidity	80% ^[1]
Max. optical deflection	0.418 rad	Supply voltage DC	15 V
Resolution	12 µrad	Current consumption	5 A
Repeatability (RMS)	2 µrad	Operation temperature	15 – 35 °C
Positioning noise (RMS)	2 mrad	Storage temperature	-10 – 60 °C
Max. gain-drift per axis	20 ppm/K	Mechanical dimensions (W × D × H)	152 × 206.9 × 180 mm
Max. offset-drift per axis	15 µrad/K	Net weight	6.6 kg

^[1] Non condensing





2D scan head

PSH-30-M-W

Dimensions are given in millimeters and are intended as reference values.
Binding information is available on request.

