

2 D SCAN HEAD

PSH-30

en | Data sheet | 1.1

- Premium 2-axis laser scan head / 30 mm
- Highest precision with minimal drift
- Laser power up to 2000 Watt, CW 1064
- Designed for demanding laser applications



Wavelength	1030 – 1080 nm ^[1]	Long-term-drift per axis (8 h)	50 µrad
Input beam diameter		Cooling method	Passive
Tracking delay	0.4 ms	Control interface	XY2-100-Standard
Writing speed	200 cps ^[2]	Humidity	80% ^[4]
Positioning speed	7 m/s ^[3]	Supply voltage DC	15 V
Max. optical deflection	0.418 rad	Current consumption	5 A
Resolution	12 µrad	Operation temperature	15 – 35 °C
Repeatability (RMS)	2 µrad	Storage temperature	-10 – 60 °C
Max. gain-drift per axis	15 ppm/K	Mechanical dimensions (W × D × H)	152 × 206.9 × 180 mm
Max. offset-drift per axis	10 µrad/K	Net weight	6.7 kg

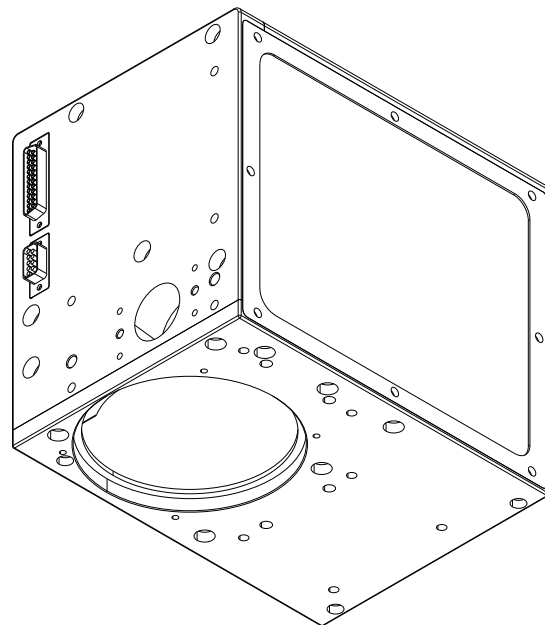
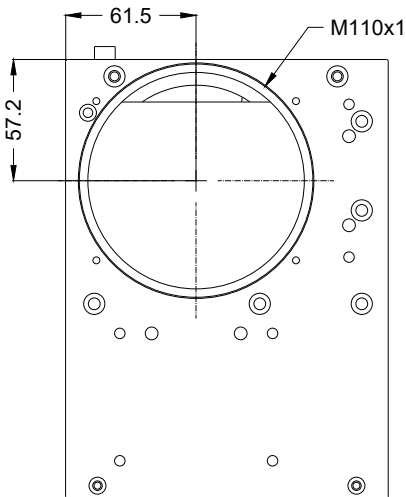
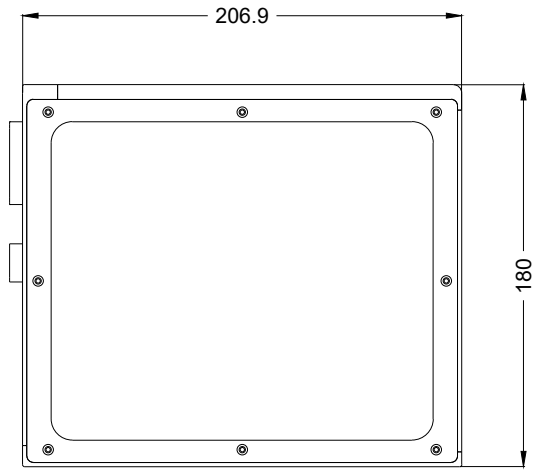
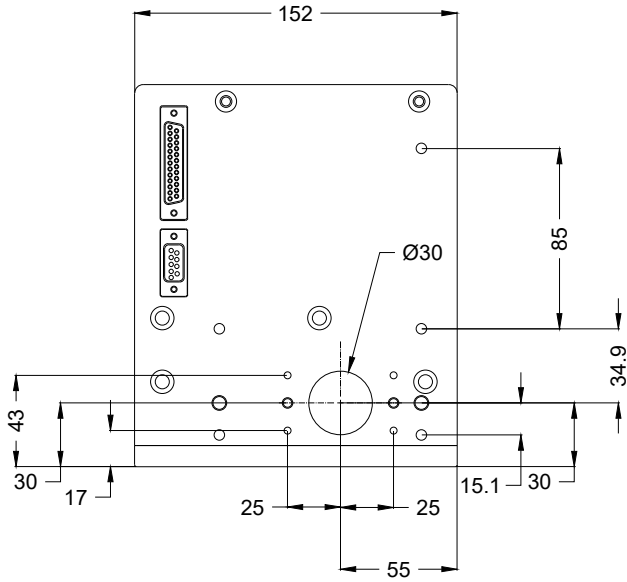
^[1] Other available wavelengths: 10600 nm

^[2] f=163 / Hight 1 mm

^[3] F-Theta f=163 / Scan field 120 x 120 mm

^[4] Non condensing





2D scan head

PSH-30

Dimensions are given in millimeters and are intended as reference values.
Binding information is available on request.

