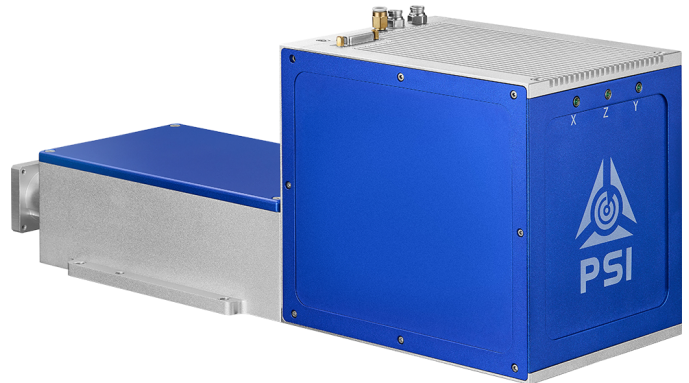


3 D S C A N H E A D

PSH-3D-30

en | Data sheet | 1.0.1

- Premium 3-axis laser deflection unit / 30 mm
- Outstanding precision, minimal drift
- Laser powers up to 3000 Watt, CW 1064 nm
- Developed for demanding 3D applications



Wavelength	1030 – 1080 nm ^[1]
Input beam diameter	15 mm
Scan field / working distance / spot size	400 x 400 mm / 581 mm / 0.04 mm ^[2]
Tracking delay	0.4 ms
Writing speed	200 cps
Marking speed	1 m/s
Max. optical deflection	0.418 rad
Resolution	12 µrad
Repeatability (RMS)	2 µrad
Max. gain-drift per axis	15 ppm/K
Max. offset-drift per axis	10 µrad/K
Long-term-drift per axis (8 h)	100 µrad
Tracking delay of the focusing unit	1 m/s

Travel speed of the focusing unit	0.15 m/s
Travel distance of the focusing unit	6 mm
Cooling method	Water / Air flush
Control interface	XY2-100-Standard
Humidity	75% ^[3]
Supply voltage DC	15 V
Current consumption	5 A
Operation temperature	15 – 35 °C
Storage temperature	-10 – 60 °C
Mechanical dimensions (W x D x H)	163 x 441 x 180 mm
Net weight	10.4 kg

^[1] Other available wavelengths: 10600 nm

^[2] Also available: 500 x 500 mm / 681 mm / 0.05 mm; 600 x 600 mm / 811 mm / 0.06 mm

^[3] Non condensing

